

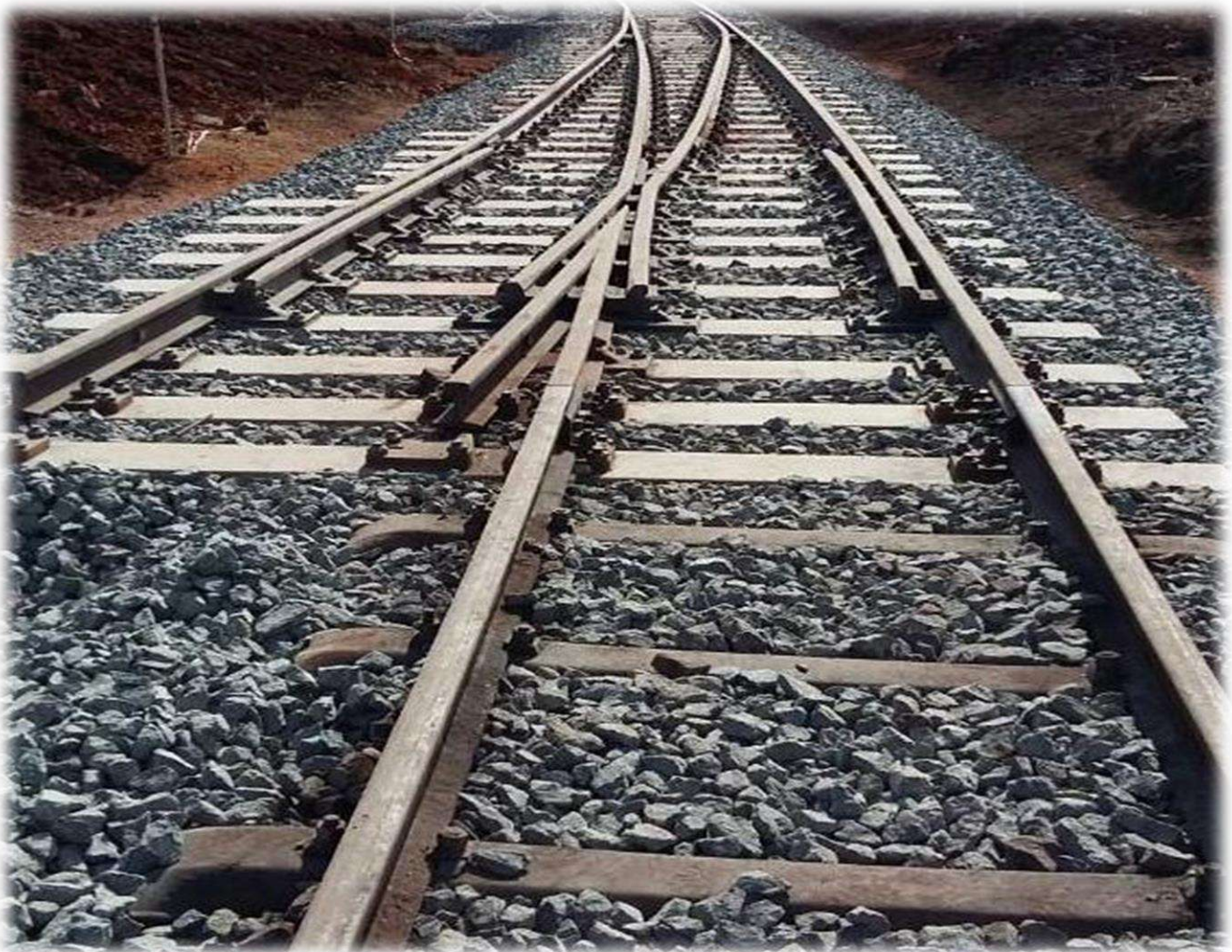


RAIL SWITCH

[P T Y] L I M I T E D

RAILWAY MATERIAL MANUFACTURERS

5 CAREL LOTTER ROAD, NUFFIELD, SPRINGS 1559
P O BOX 13913, NORTHMEAD, BENONI, 1511
GAUTENG, SOUTH AFRICA
TEL: (011) 363-3172 or 081 756 1787
FAX TO EMAIL: 086 554 0457
REG. NO. 1997/003489/07
WEB: www.railswitch.co.za



48kg 1 in 12 Similar Flexure Turnout on Concrete- Installed by Client

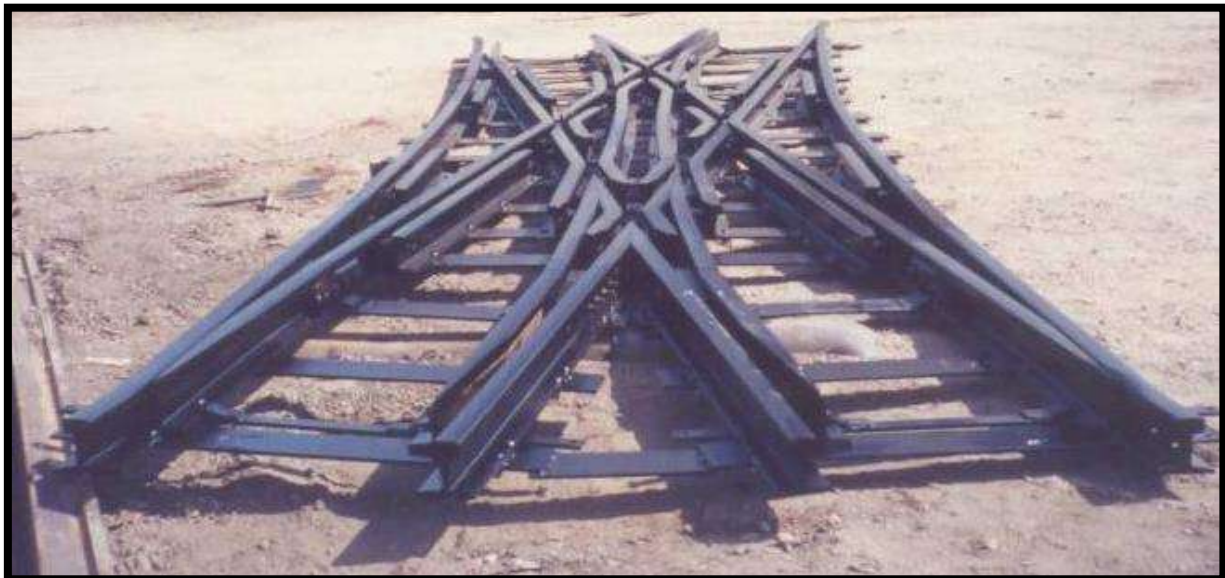
CONTACT DETAILS:

STEVEN BELL
WORKS MANAGER
CELL: 082 826 2569
stevenb@railswitch.co.za

CHRISSIE VAN DER COLFF
ADMIN/FINANCE
CELL: 061 131 1073
info@railswitch.co.za

INTRODUCTION:

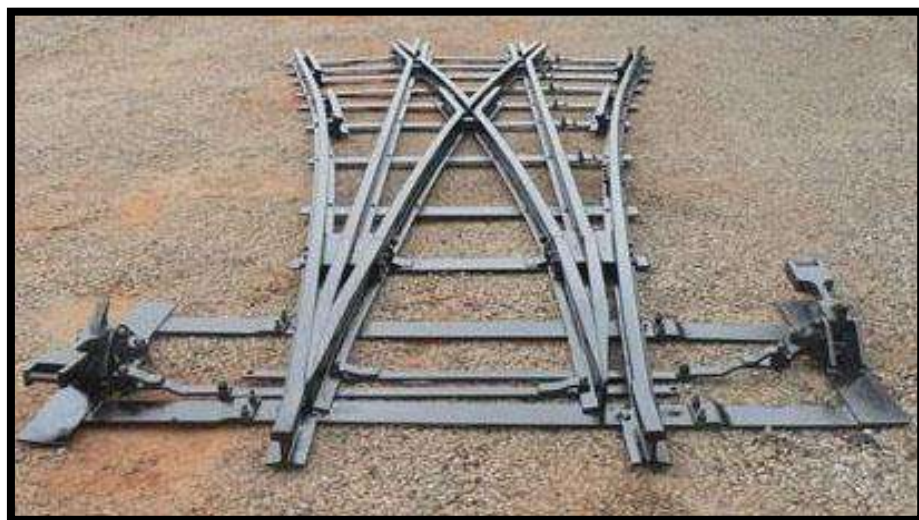
RAIL SWITCH's main area of business includes the supply of permanent way material such as broad gauge turnouts, narrow gauge turnouts, special turnouts (to client specifications), rail, rail fittings, reconditioned rails, steel sleepers, reconditioned steel sleepers, turnout sleeper sets and sleeper fittings.

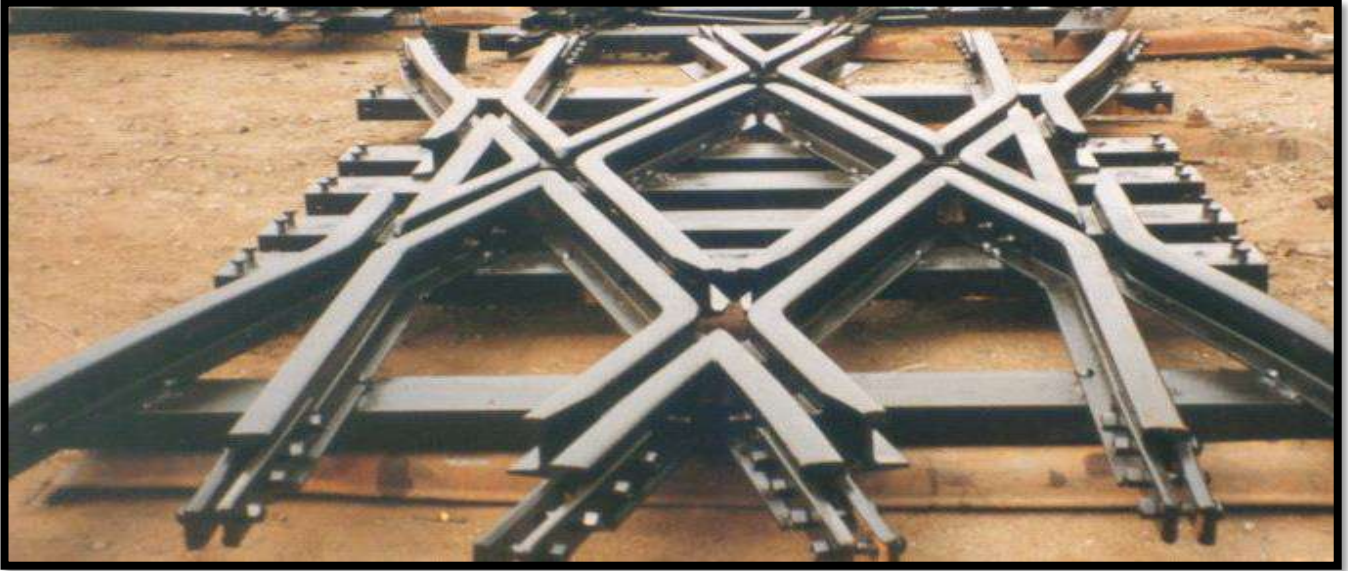


ABOUT RAIL SWITCH:

The Company has been operating for over 20 years, specialising in the supply of new and second hand railway track material.

Over the past 20 years the Company has specialised in the manufacture of new rail track products as listed above for both broad gauge and narrow gauge application (surface and underground). This was initiated by our customers who have a need for both second hand and new materials. The fact that there are very few suppliers of new material afforded us a competitive edge in this market sector. Because we are innovative in our approach, we can offer the best solutions to customers' needs at a competitive price. We manufacture all types of turnouts (e.g. diamonds, scissors, crossovers, etc.) for any gauge or rail size to suit the customer's requirements.





SLEEPERS:

We have a large range of steel sleepers to meet any requirements.

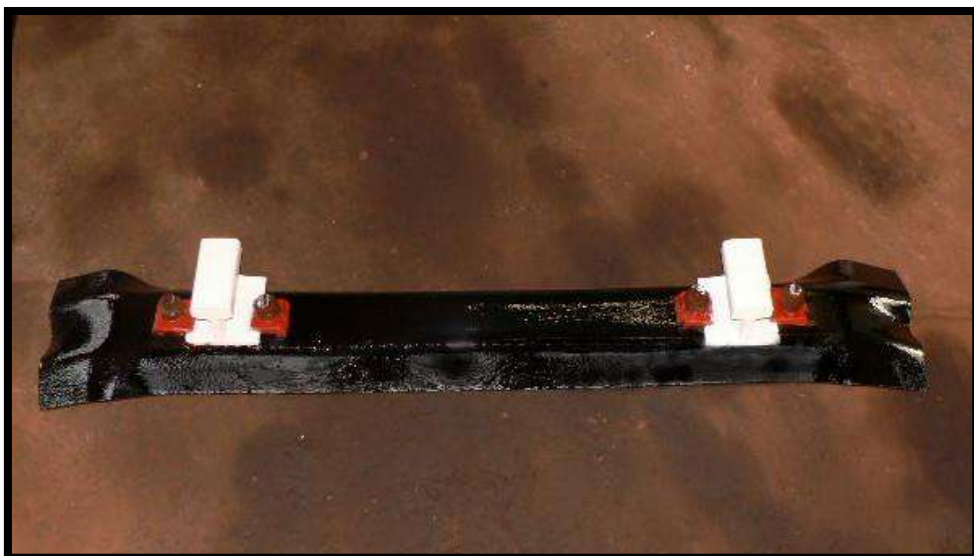
Steel sleepers offer many cost benefits. They are long lasting, easy to install and maintain and are easily handled by one person. With steel sleepers, we can supply insulation where required as well as Pandrol rail fasteners.

STEEL SLEEPERS (including fittings)

Heavy duty steel sleepers (29,26kg/m) and fasteners (T-bolts and clips or Pandrol fasteners).

CROSSING SLEEPERS

Heavy duty steel crossing sleepers and fasteners for a wide range of turnouts.



MINING:

SWITCHES

We supply a wide range of switches for surface and underground use, to any angle or length, in 610mm, 762mm, 914mm and 1065mm gauges.

Our narrow gauge switches can be supplied with various types of rail. Sizes range from 40kg/m down to 15kg/m.

Switches can incorporate either flat mild steel sleepers or channel sleepers.

In addition to designing and manufacturing any turnout required, Rail Switch also supplies a complete range of rail fastenings. These include fishplates, fish bolts, soleplates, coach screws, dog spikes, junction fishplates, lever boxes and connecting rods.

Rail Switch switches, Jump Sets, and Turntables and other track equipment are in use in numerous mines in South Africa as well as many neighbouring states throughout Southern Africa.



HEAVY DUTY “RAILBOUND” CROSSINGS:

For heavy axle load and high traffic frequency conditions the **rail bound crossing** is an ideal solution to the problem of excessive wear. The design incorporates a 14% manganese steel insert that is bolted securely between two specially bent and machined wing rails. The crossing nose and wing rail areas which are normally subjected to high impact and wear under heavy traffic conditions are effectively replaced by rapidly work-hardening and wear resistant manganese steel.

As the wing rails are manufactured from normal rail steel the crossing can be readily welded into track by the Thermit process. The greatly extended service life obtained by the use of manganese steel in this application is well proven and considerable reductions in both maintenance and replacement costs over the life of the turnout can be achieved. This rail bound crossing is available for both 1 in 12 and 1 in 9 turnouts.

HEAVY DUTY RAILBOUND CROSSING FOR STEEL



RAIL MANUFACTURED CROSSING FOR WOOD



THE “DG’ GAUGE BAR FOR USE WITH TRACK IN CONCRETE:

Rail Switch supplies the DG Type Gauge Bar. Hereunder we list the advantages of using the DG Type Gauge Bar over the conventional Gauge Bar:

THE CONVENTIONAL GAUGE BAR

The conventional Gauge Bar consists of 25mm diameter round bar threaded on both ends to take M24 nuts. The problem with this method is that you have to drill the rail to fit the Gauge Bar, which is not cost effective and also takes a lot more time.

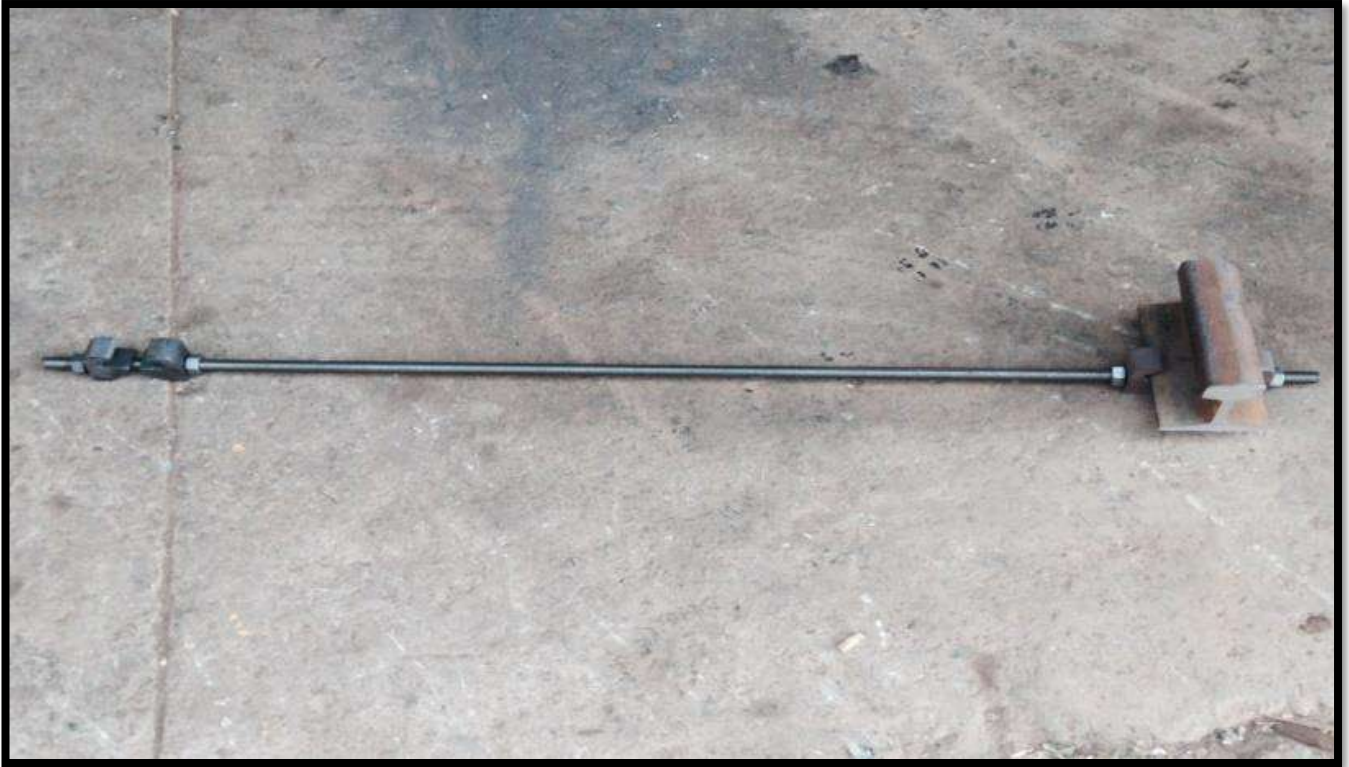
The other disadvantage to using this method is that because you have to drill the web of the rail, the cover for concrete is inadequate resulting in the concrete cracking above the Gauge Bar.

DG TYPE GAUGE BAR

The DG Type Gauge Bar consists of 16 mm threaded round bar to take 4 x M16 nuts and 4 specially designed DG Gauge clips which fit onto the flange of the rail.

This method is a lot more cost effective as you don't have to drill the web, therefore giving a time saving. In the same time it takes to fit a Gauge Bar the conventional way, you could fit several DG Gauge Bars. It also does not result in the concrete cracking as there is more distance between the top of the rail and the gauge bar.

Another advantage is this method is that it allows for easy gauge widening around curves, by merely adjusting the distance between the gauge clips.



48kg 1:9 NEW DESIGN TURNOUT ON STEEL SLEEPERS COMPLETE WITH ALL FASTENINGS AND SAR TYPE TUMBLER



48kg 1:12 NEW DESIGN TURNOUT ON WOODEN SLEEPERS COMPLETE WITH ALL FASTENINGS AND SAR TYPE TUMBLER



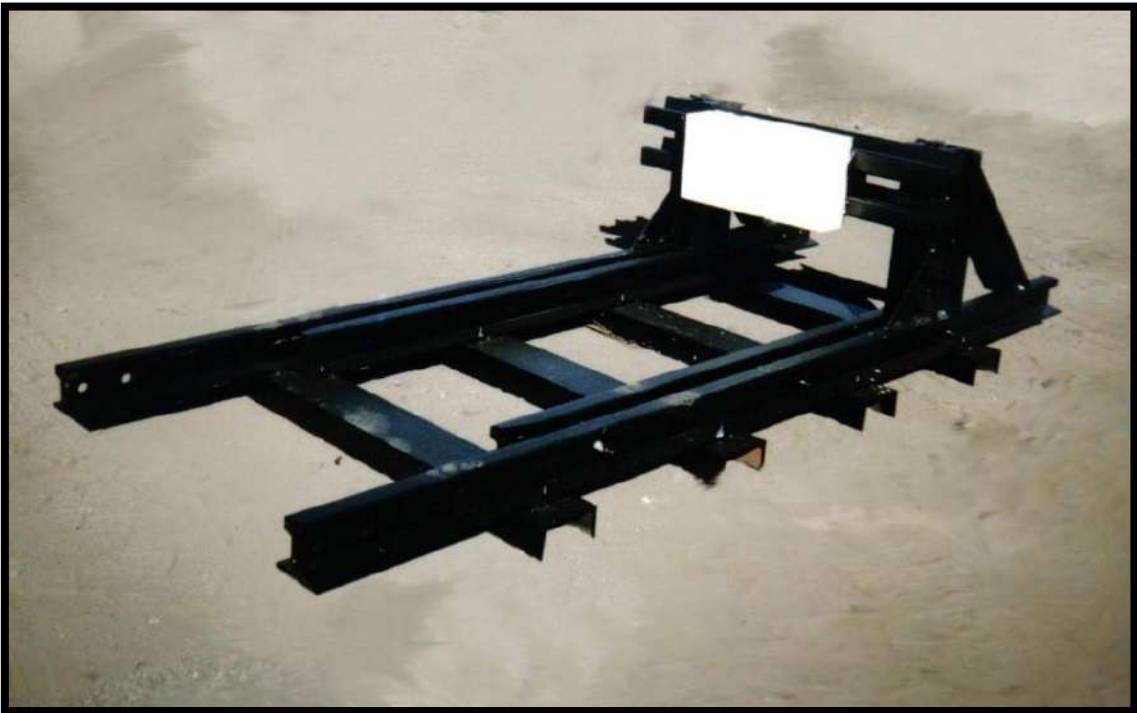
SCISSORS CROSS OVER FOR NARROW GAUGE



TURN TABLE



STOP BLOCK ON STEEL SLEEPERS



48kg 1 in 12 SIMILAR FLEXURE TURNOUT FOR CONCRETE SLEEPERS



